

IMAGE OF THE MONTH

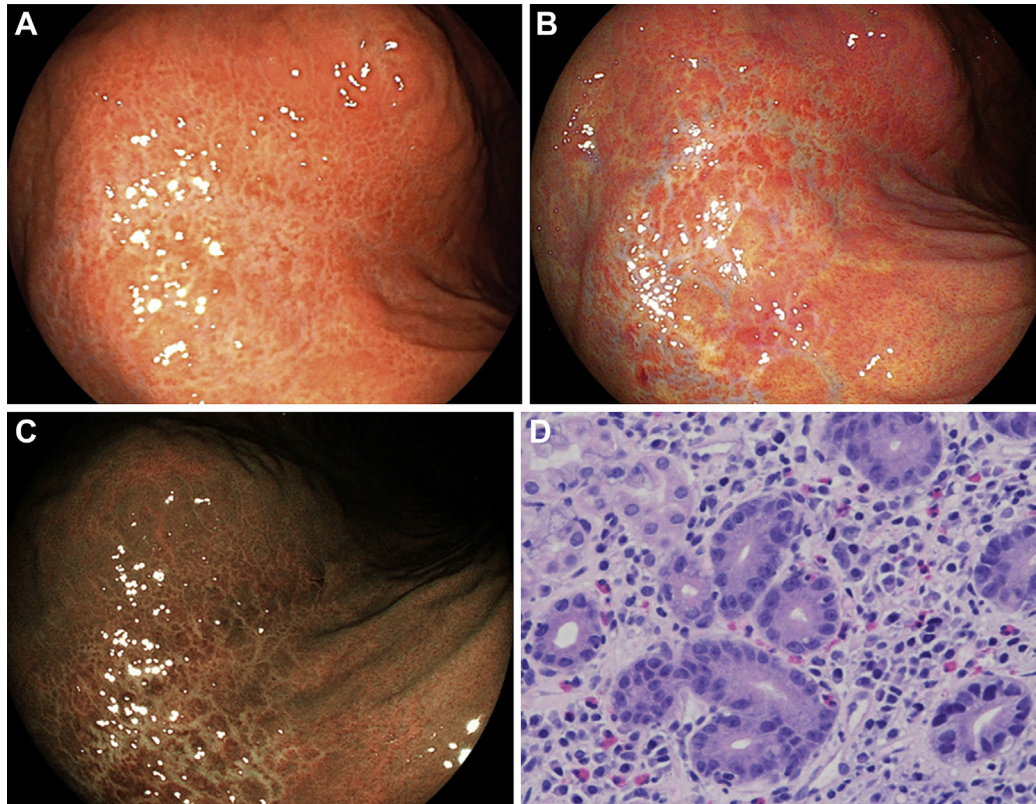
Eosinophilic Gastritis Mimicking Mucosa-Associated Lymphoid Tissue Lymphoma



Kitoshi Kubo¹ and Noriko Kimura²

¹Department of Gastroenterology, National Hospital Organization Hakodate National Hospital, Hakodate, Hokkaido, Japan; and

²Department of Pathology, National Hospital Organization Hakodate National Hospital, Hakodate, Hokkaido, Japan



A 37-year-old man was referred to our hospital for epigastric pain. Laboratory findings showed a mildly elevated eosinophil count and negativity for serum *Helicobacter pylori* immunoglobulin G antibody. In the greater curvature of the gastric upper body, esophagogastroduodenoscopy revealed a pale, ill-demarcated, slightly depressed lesion presenting as a reddish granular mucosa in its internal area on white light imaging (Figure A). Linked color imaging (LCI) highlighted the lesion as a purple-colored depressed lesion presenting as an orangish granular mucosa in its internal area (Figure B), and blue laser imaging highlighted the pale area as whitish (Figure C). A histopathologic examination of biopsy specimens, performed for differential diagnosis of mucosa-associated lymphoid tissue lymphoma and eosinophilic gastritis (EG), showed marked infiltration of eosinophils (≥ 20 /high power field

(Figure D). The patient was diagnosed with EG and treated with prednisolone.

EG is a rare chronic allergic disease of the gastrointestinal tract presenting with varied endoscopic findings. LCI is a recently developed technique that enhances color differences between mucosal surface structures and vessels. The endoscopic images with LCI presented here should provide a clear illustration of how LCI may be effectively used to depict EG with its unique

Most current article

Copyright © 2022 The Authors. Published by Elsevier Inc. on behalf of the AGA Institute. This is an open access article under the CC BY-NC-ND license (<http://creativecommons.org/licenses/by-nc-nd/4.0/>).

2772-5723

<https://doi.org/10.1016/j.gastha.2022.06.006>

mucosa-associated lymphoid tissue lymphoma-like appearance and serve as a reference for endoscopists.

Received June 2, 2022. Accepted June 8, 2022.

Correspondence:

Address correspondence to: Kimitoshi Kubo, MD, Department of Gastroenterology, National Hospital Organization Hakodate National Hospital, 18-16 Kawahara-cho, Hakodate, Hokkaido 041-8512, Japan. e-mail: kubotti25@yahoo.co.jp.

Conflicts of Interest:

The authors disclose no conflicts.

Funding:

The authors report no funding.

Ethical Statement:

The corresponding author, on behalf of all authors, jointly and severally, certifies that their institution has approved the protocol for any investigation involving humans or animals and that all experimentation was conducted in conformity with ethical and humane principles of research.